

# KHSAA Basketball - Game Box Score

## Iroquois Lady Raiders vs. Montgomery County Lady Indians

**Date: 03/13/2009 Time: 12 pm CST Site: Diddle Arena-Bowling Green, KY Attendance: N**

### Visitors: Montgomery County Lady Indians

##	Name	P	FG	3 Pt	FT	PTS	ORB	DRB	TR	PF	AST	TO	BS	ST	MIN
3	* Mackenzie Lee		4/8	1/3	0/0	11	1	5	6	3	2	6	0	1	31:39
10	Katie Thompson		1/1	0/2	0/0	2	0	2	2	1	1	1	0	1	20:28
22	Tori Cincotta		0/0	0/0	0/0	0	0	0	0	0	0	0	0	0	DNP
23	* Elizabeth Prewitt		2/2	0/3	1/2	5	1	4	5	4	2	3	0	0	27:40
24	Casey Newsome		0/0	0/0	0/0	0	0	0	0	0	0	0	0	0	DNP
30	Susan Hodgson		0/0	0/0	0/0	0	0	0	0	0	0	0	0	0	DNP
33	* Kayla Webb		3/3	1/3	2/3	11	1	3	4	2	1	5	1	0	25:19
34	* Annie Garland		1/5	0/2	0/0	2	3	2	5	2	0	1	0	0	21:16
35	* Mary Jehlik		2/6	0/0	0/0	4	2	5	7	2	0	3	2	0	20:49
44	Brooke Colliver		1/2	0/0	0/0	2	1	2	3	2	1	0	0	0	12:49
Team						0			3	3					
<b>Totals</b>			<b>14/27</b>	<b>2/13</b>	<b>3/5</b>	<b>37</b>	<b>9</b>	<b>26</b>	<b>35</b>	<b>16</b>	<b>7</b>	<b>19</b>	<b>3</b>	<b>2</b>	<b>160</b>
<b>2 PT FG</b>			1st Half		8/13	61.5%	2nd Half		6/14	42.9%	Game	14/27	51.9%		
<b>3 PT FG</b>			1st Half		2/7	28.6%	2nd Half		0/6	0.00%	Game	2/13	15.4%		
<b>Free Throws</b>			1st Half		2/3	66.7%	2nd Half		1/2	50.0%	Game	3/5	60.0%		

### Home: Iroquois Lady Raiders

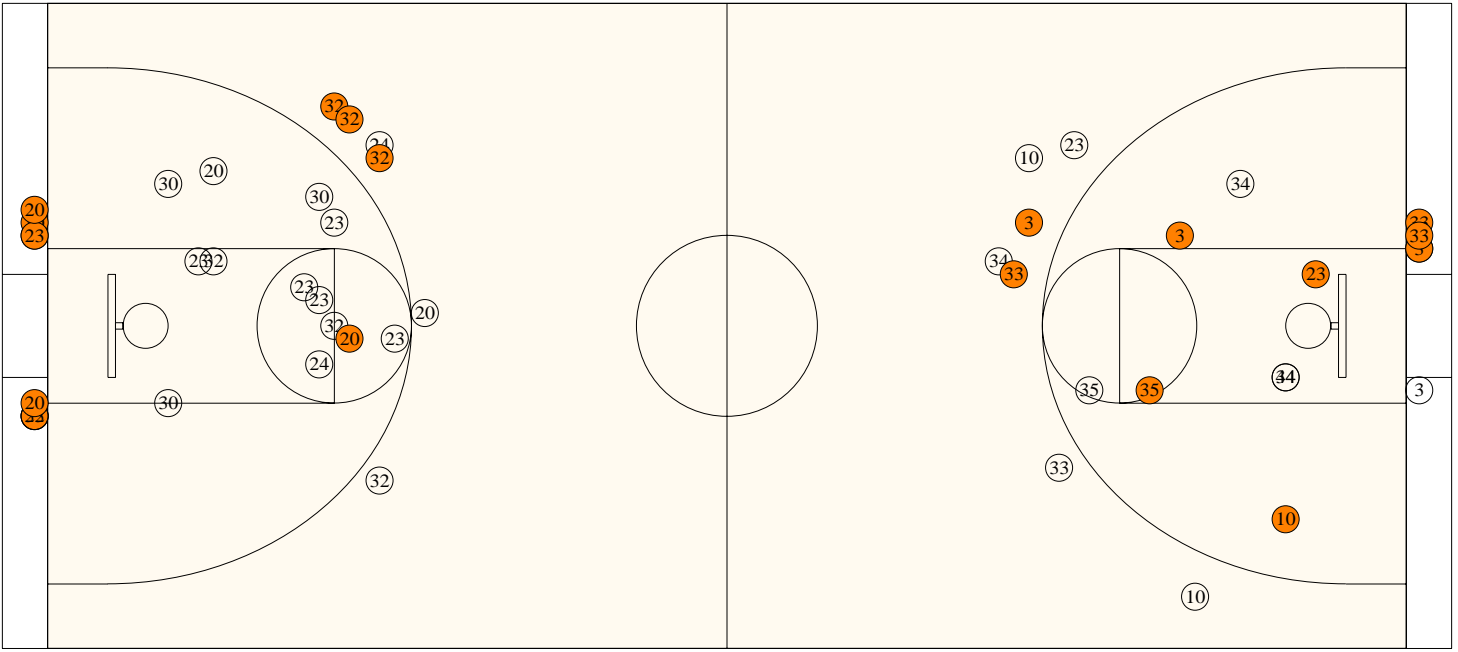
##	Name	P	FG	3 Pt	FT	PTS	ORB	DRB	TR	PF	AST	TO	BS	ST	MIN
5	Brittany Glasser		0/0	0/0	0/0	0	0	0	0	0	0	0	0	0	DNP
10	Myiasha Taylor		0/0	0/0	0/0	0	0	0	0	0	0	0	0	0	2:05
11	Aisia Kindle		0/0	0/0	0/0	0	0	0	0	0	0	0	0	0	DNP
12	* Asia Mathies		2/4	0/1	0/0	4	1	1	2	2	1	0	0	3	28:13
20	Meka Birdsong		5/9	0/1	2/4	12	3	2	5	2	0	1	0	0	19:06
22	* Stafonia Taylor		1/1	0/0	0/0	2	0	1	1	1	0	0	0	0	1:32
23	* Adia Mathies		4/12	0/0	6/8	14	1	5	6	1	6	1	1	2	32:00
24	* Kayla Hickman		0/1	0/1	0/0	0	0	1	1	2	2	1	0	2	26:16
30	* Victoria Brown		2/10	0/0	0/0	4	0	2	2	1	2	2	0	0	26:39
32	Carmen Talbott		0/3	3/4	1/3	10	0	3	3	2	0	0	0	0	24:09
33	Daneshia Scott		0/0	0/0	0/0	0	0	0	0	0	0	0	0	0	DNP
50	Jane Ford		0/0	0/0	0/0	0	0	0	0	0	0	0	0	0	DNP
55	Laquasha Jones		0/0	0/0	0/0	0	0	0	0	0	0	0	0	0	DNP
Team						2			1	3					
<b>Totals</b>			<b>14/40</b>	<b>3/7</b>	<b>9/15</b>	<b>46</b>	<b>7</b>	<b>16</b>	<b>23</b>	<b>11</b>	<b>11</b>	<b>5</b>	<b>1</b>	<b>7</b>	<b>160</b>
<b>2 PT FG</b>			1st Half		8/21	38.1%	2nd Half		6/19	31.6%	Game	14/40	35.0%		
<b>3 PT FG</b>			1st Half		3/6	50.0%	2nd Half		0/1	0.00%	Game	3/7	42.9%		
<b>Free Throws</b>			1st Half		2/4	50.0%	2nd Half		7/11	63.6%	Game	9/15	60.0%		

	MONT	IROQ		MONT	IROQ		MONT	IROQ
Free Throw Pts	3	9	3Pt Points	6	9	Pts/Possession	0.71	0.87
Pts off Turnovers	2	20	2nd Chance Points	13	5	Pts off Bench	4	22
Total Rebounds	35	23	Team Rebounds	3	3	Dead Ball Reb	1	3
Off Rebound %	36.0	21.2	Def Rebound %	78.8	64.0	Total Rebound %	60.3	39.7
3Pt Efficiency	-19.2	+19.5	Def. Stops	31	35	Pts/Shot	0.88	0.85
Technical Fouls	<b>MONT</b>			None				
	<b>IROQ</b>			None				
Officials	Unknown							

	Qtr 1	Qtr 2	Qtr 3	Qtr 4	OT 1	OT 2	OT 3	OT 4	Total
<b>Montgomery County Lady Indians</b>	8	16	9	4	0	0	0	0	<b>37</b>
<b>Iroquois Lady Raiders</b>	13	14	6	13	0	0	0	0	<b>46</b>

**Largest Lead** IROQ 13 MONT 4 (9 pts) **Lead Changes** 6 **Number of Ties** 4  
**Comments:** None

**FIRST HALF**



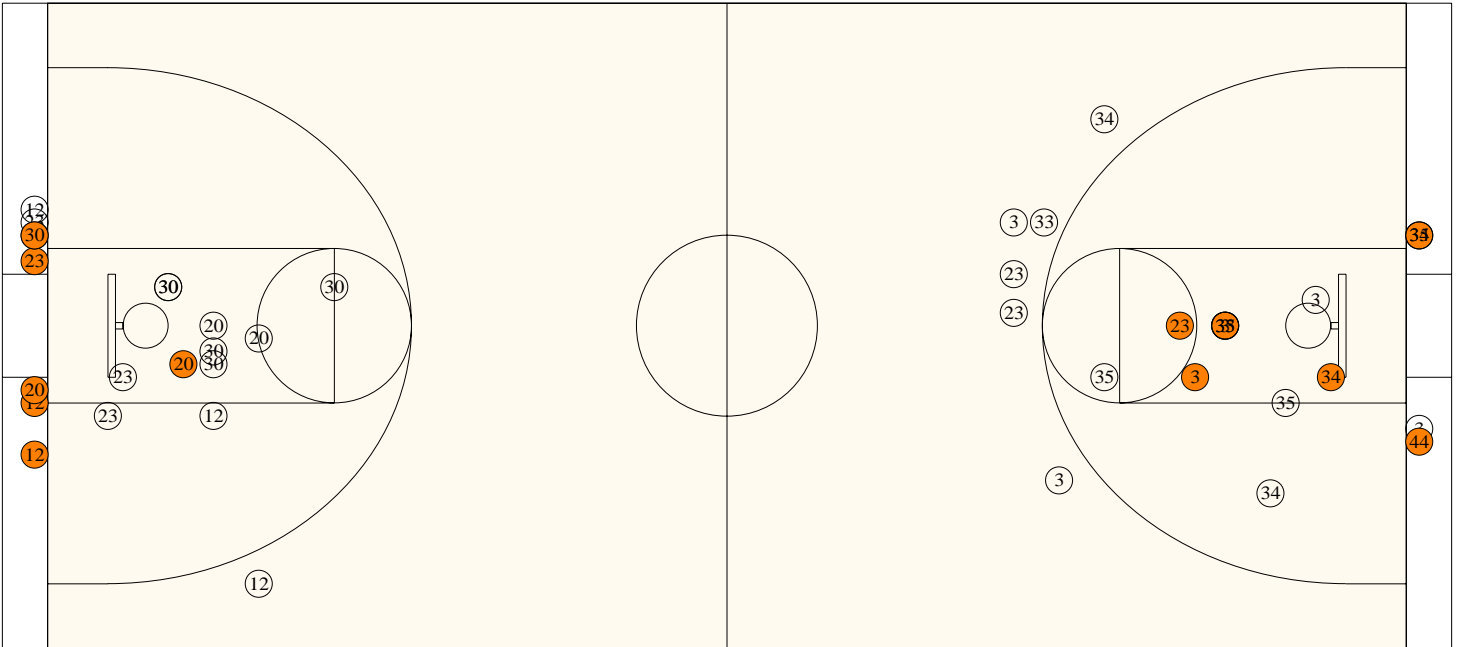
**Iroquois**

Shooting	Pts	Pts
2FG 8/21 (38.1%)	16	Pts/Shot 0.93
3FG 3/6 (50.0%)	9	2nd Eff Pts 4
TFG 11/27 (40.7%)		Pts off TO's 12
FT 2/4 (50.0%)	2	3Pt Eff +24.6
Scoring Distribution: 2FG 59.3% 3FG 33.3% FT 7.4%		

**Montgomery County**

Shooting	Pts	Pts
2FG 8/13 (61.5%)	16	Pts/Shot 1.14
3FG 2/7 (28.6%)	6	2nd Eff Pts 7
TFG 10/20 (50.0%)		Pts off TO's 0
FT 2/3 (66.7%)	2	3Pt Eff -12.5
Scoring Distribution: 2FG 66.7% 3FG 25.0% FT 8.3%		

**SECOND HALF**



**Iroquois**

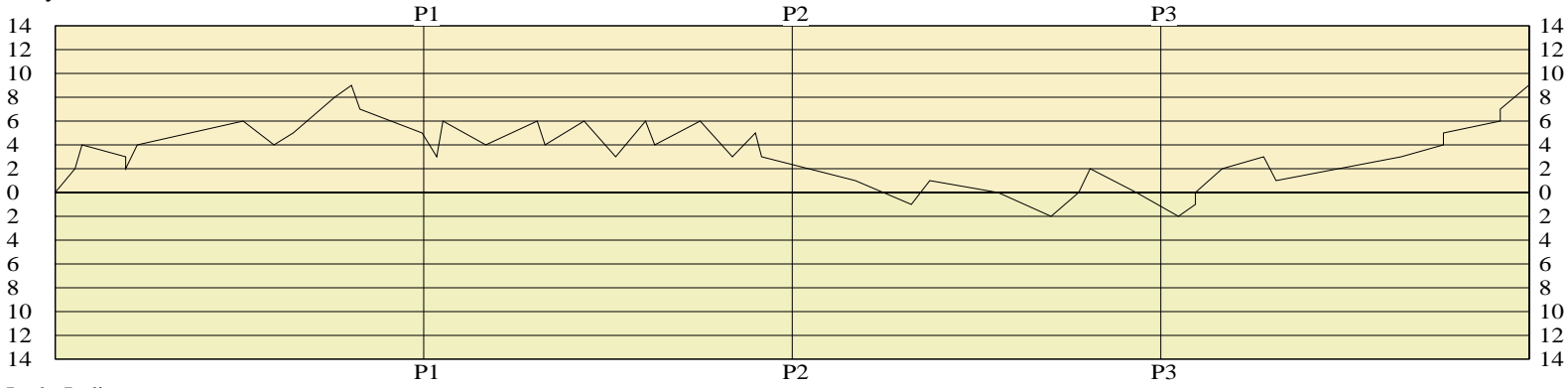
2FG 6/19 (31.6%)	12s	Pts/Shot 0.76
3FG 0/1 (0.00%)	0	2nd Eff Pts 1
TFG 6/20 (30.0%)		Pts off TO's 8
FT 7/11 (63.6%)	7	3Pt Eff -21.1
Scoring Distribution: 2FG 63.2% 3FG 0.0% FT 36.8%		

**Montgomery County**

2FG 6/14 (42.9%)	12s	Pts/Shot 0.62
3FG 0/6 (0.00%)	0	2nd Eff Pts 6
TFG 6/20 (30.0%)		Pts off TO's 2
FT 1/2 (50.0%)	1	3Pt Eff -28.6
Scoring Distribution: 2FG 92.3% 3FG 0.0% FT 7.7%		

Lady Raiders

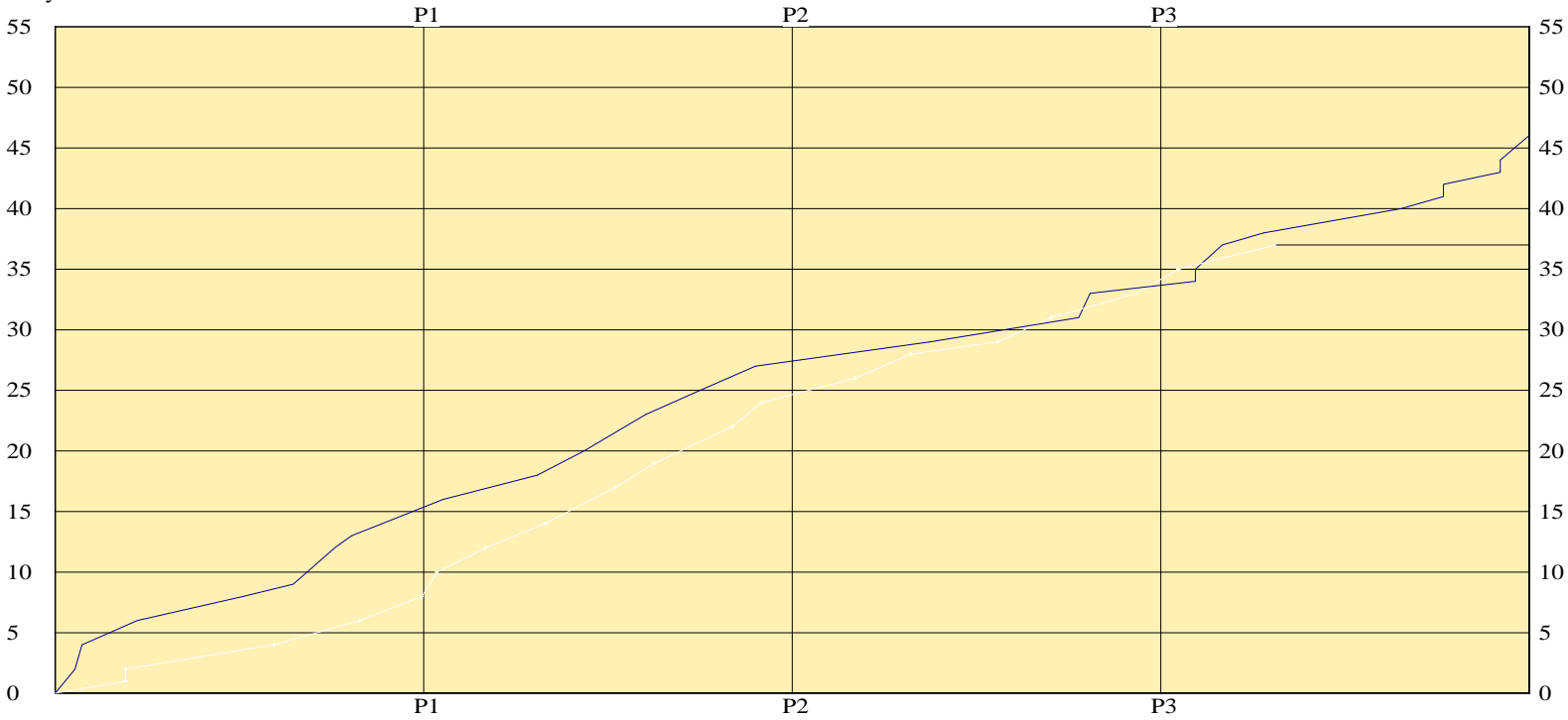
LEAD TIMELINE



Lady Indians

Lady Raiders  
 Lady Indians

SCORING TIMELINE



Largest Lead IROQ 13 MONT 4 (9 pts) Lead Changes 6 Number of Ties 4

**KHSAA Basketball - Play by Play Report - Scoring Only (pg 1)**

**Iroquois Lady Raiders vs. Montgomery County Lady Indians**

**Date: 03/13/2009 Time: 12 pm CST Site: Diddle Arena-Bowling Green, KY Attendance: N**

Name	Action	Action	Score	Clock	Diff	Name	Action	Action
A Mathies	Layup Made	V Brown Assist	2-0	1 7:34	+2 (L1)			
S Taylor	Layup Made		4-0	1 7:25	+4			
			4-1	1 6:28	+3	K Webb	FT Made	
			4-2	1 6:28	+2	K Webb	FT Made	
V Brown	Layup Made	K Hickman Assist	6-2	1 6:13	+4			
A Mathies	Layup Made		8-2	1 3:55	+6			
			8-4	1 3:15	+4	E Prewitt	FG Made	K Webb Assist
M Birdsong	FT Made		9-4	1 2:50	+5			
C Talbott	3Pt Made	K Hickman Assist	12-4	1 1:56	+8			
C Talbott	FT Made		13-4	1 1:34	+9			
			13-6	1 1:23	+7	K Thompson	FG Made	M Lee Assist
			13-8	1 0:02	+5	M Lee	FG Made	

**End of Period Summary Lady Raiders 13 Lady Indians 8**

**Largest Lead: Lady Raiders 13 Lady Indians 4 (9 pts)**

**Lead in Period: Lady Raiders 13 Lady Indians 4 (9 pts)**

**Lead Changes: 1 Ties: 0**

**Lead Changes: 0 Ties: 0 (this period)**

**1 for 0 oppo pts**

**2 for 2 pts**

**5/14 for 35.7 %**

**2/4 for 50.0 %**

**Turnovers**

**2nd Chances**

**Field Goals**

**Free Throws**

**8 for 5 oppo pts**

**3 for 2 pts**

**3/9 for 33.3 %**

**2/2 for 100 %**

C Talbott	3Pt Made	A Mathies Assist	13-10	2 7:43	+3	M Lee	Layup Made	K Thompson Assist
			16-10	2 7:35	+6			
M Birdsong	FG Made	A Mathies Assist	18-12	2 5:32	+6	M Jehlik	FG Made	
			18-14	2 5:22	+4	K Webb	Layup Made	
A Mathies	Layup Made		20-14	2 4:31	+6			
			20-17	2 3:50	+3	M Lee	3Pt Made	E Prewitt Assist
C Talbott	3Pt Made	A Mathies Assist	23-17	2 3:11	+6			
			23-19	2 2:59	+4	M Lee	Layup Made	
M Birdsong	Layup Made	A Mathies Assist	25-19	2 2:00	+6			
			25-22	2 1:18	+3	K Webb	3Pt Made	
M Birdsong	Layup Made		27-22	2 0:48	+5			
			27-24	2 0:40	+3	K Webb	Layup Made	

**End of Period Summary Lady Raiders 27 Lady Indians 24**

**Largest Lead: Lady Raiders 13 Lady Indians 4 (9 pts)**

**Lead in Period: Lady Raiders 16 Lady Indians 10 (6 pts)**

**Lead Changes: 1 Ties: 0**

**Lead Changes: 0 Ties: 0 (this period)**

**1 for 0 oppo pts**

**1 for 2 pts**

**6/13 for 46.2 %**

**0/0 for 0.00 %**

**Turnovers**

**2nd Chances**

**Field Goals**

**Free Throws**

**3 for 7 oppo pts**

**1 for 5 pts**

**7/11 for 63.6 %**

**0/1 for 0.00 %**

			27-26	3 6:38	+1	K Webb	FG Made	
			27-28	3 5:25	-1 (L2)	A Garland	Putback Made	
A Mathies	Layup Made	A Mathies Assist	29-28	3 5:01	+1 (L3)			
			29-29	3 3:32	(T1)	E Prewitt	FT Made	
			29-31	3 2:23	-2 (L4)	E Prewitt	FG Made	
A Mathies	Layup Made	V Brown Assist	31-31	3 1:47	(T2)			
M Birdsong	FG Made		33-31	3 1:32	+2 (L5)			
			33-33	3 0:32	(T3)	M Lee	FG Made	B Colliver Assist

KHSAA Basketball - Play by Play Report - Scoring Only (pg 2)

Iroquois Lady Raiders vs. Montgomery County Lady Indians

Date: 03/13/2009 Time: 12 pm CST Site: Diddle Arena-Bowling Green, KY Attendance: N

Name	Action	Action	Score	Clock	Diff	Name	Action	Action	
<b>End of Period Summary Lady Raiders 33 Lady Indians 33</b>									
<b>Largest Lead: Lady Raiders 13 Lady Indians 4 (9 pts)</b>						<b>Lead Changes: 5 Ties: 3</b>			
<b>Lead in Period: Lady Raiders 27 Lady Indians 24 (3 pts)</b>						<b>Lead Changes: 3 Ties: 3 (this period)</b>			
<b>1 for 2 oppo pts</b>						<b>3 for 2 oppo pts</b>			
<b>2 for 0 pts</b>						<b>3 for 6 pts</b>			
<b>3/13 for 23.1 %</b>						<b>4/9 for 44.4 %</b>			
<b>0/1 for 0.00 %</b>						<b>1/2 for 50.0 %</b>			
						<b>Turnovers</b>			
						<b>2nd Chances</b>			
						<b>Field Goals</b>			
						<b>Free Throws</b>			
A Mathies	FT Made		33-35	4	7:37	-2 (L6)	M Jehlik	Layup Made	E Prewitt Assist
A Mathies	FT Made		34-35	4	7:15	-1			
A Mathies	FT Made		35-35	4	7:15	(T4)			
M Birdsong	Layup Made	A Mathies Assist	37-35	4	6:40	+2 (L7)			
M Birdsong	FT Made		38-35	4	5:46	+3			
			38-37	4	5:30	+1	B Colliver	Layup Made	M Lee Assist
A Mathies	Layup Made		40-37	4	2:47	+3			
A Mathies	FT Made		41-37	4	1:52	+4			
A Mathies	FT Made		42-37	4	1:52	+5			
A Mathies	FT Made		43-37	4	0:38	+6			
A Mathies	FT Made		44-37	4	0:38	+7			
V Brown	Layup Made	A Mathies Assist	46-37	4	0:01	+9			

**End of Period Summary Lady Raiders 46 Lady Indians 37**

<b>Largest Lead: Lady Raiders 13 Lady Indians 4 (9 pts)</b>						<b>Lead Changes: 7 Ties: 4</b>		
<b>Lead in Period: Lady Raiders 46 Lady Indians 37 (9 pts)</b>						<b>Lead Changes: 1 Ties: 1 (this period)</b>		
<b>2 for 0 oppo pts</b>						<b>5 for 6 oppo pts</b>		
<b>2 for 1 pts</b>						<b>2 for 0 pts</b>		
<b>3/7 for 42.9 %</b>						<b>2/11 for 18.2 %</b>		
<b>7/10 for 70.0 %</b>						<b>0/0 for 0.00 %</b>		
						<b>Turnovers</b>		
						<b>2nd Chances</b>		
						<b>Field Goals</b>		
						<b>Free Throws</b>		

**OFFICIAL BASKETBALL BOX SCORE**

03/13/2009 12 pm CST

Diddle Arena

Montgomery County Lady Indians vs Iroquois Lady Raiders

Final Box Score

Bowling Green, KY

No.	Montgomery County Lady Indians	Total FG		3-point		Free throw		Rebounds			F	TP	A	TO	BLK	STL	MIN
		FG	FGA	FG	FGA	FT	FTA	Off	Def	Tot							
3	Mackenzie Lee	5	11	1	3	0	0	1	5	6	3	11	2	6	0	1	31:39
10	Katie Thompson	1	3	0	2	0	0	0	2	2	1	2	1	1	0	1	20:28
22	Tori Cincotta	0	0	0	0	0	0	0	0	0	0	0	0	0	0	0	DNP
23	Elizabeth Prewitt	2	5	0	3	1	2	1	4	5	4	5	2	3	0	0	27:40
24	Casey Newsome	0	0	0	0	0	0	0	0	0	0	0	0	0	0	0	DNP
33	Kayla Webb	4	6	1	3	2	3	1	3	4	2	11	1	5	1	0	25:19
34	Annie Garland	1	7	0	2	0	0	3	2	5	2	2	0	1	0	0	21:16
35	Mary Jehlik	2	6	0	0	0	0	2	5	7	2	4	0	3	2	0	20:49
44	Brooke Colliver	1	2	0	0	0	0	1	2	3	2	2	1	0	0	0	12:49
30	Susan Hodgson	0	0	0	0	0	0	0	0	0	0	0	0	0	0	0	DNP
<b>Team (Included in Totals)</b>								<b>0</b>	<b>3</b>	<b>3</b>							
<b>Totals</b>		<b>16</b>	<b>40</b>	<b>2</b>	<b>13</b>	<b>3</b>	<b>5</b>	<b>9</b>	<b>26</b>	<b>35</b>	<b>16</b>	<b>37</b>	<b>7</b>	<b>19</b>	<b>3</b>	<b>2</b>	<b>160</b>

Total FG%: 1st half 10 - 20 (50.0%) 2nd half 6 - 20 (30.0%) Game 16 - 40 (40.0%)  
 3Pt FG%: 1st half 2 - 7 (28.6%) 2nd half 0 - 6 (0.00%) Game 2 - 13 (15.4%)  
 FT%: 1st half 2 - 3 (66.7%) 2nd half 1 - 2 (50.0%) Game 3 - 5 (60.0%)

Deadball rebounds 1

No.	Iroquois Lady Raiders	Total FG		3-point		Free throw		Rebounds			F	TP	A	TO	BLK	STL	MIN
		FG	FGA	FG	FGA	FT	FTA	Off	Def	Tot							
5	Brittany Glasser	0	0	0	0	0	0	0	0	0	0	0	0	0	0	0	DNP
10	Myiasha Taylor	0	0	0	0	0	0	0	0	0	0	0	0	0	0	0	2:05
11	Aisia Kindle	0	0	0	0	0	0	0	0	0	0	0	0	0	0	0	DNP
12	Asia Mathies	2	5	0	1	0	0	1	1	2	2	4	1	0	0	3	28:13
20	Meka Birdsong	5	10	0	1	2	4	3	2	5	2	12	0	1	0	0	19:06
23	Adia Mathies	4	12	0	0	6	8	1	5	6	1	14	6	1	1	2	32:00
30	Victoria Brown	2	10	0	0	0	0	0	2	2	1	4	2	2	0	0	26:39
24	Kayla Hickman	0	2	0	1	0	0	0	1	1	2	0	2	1	0	2	26:16
32	Carmen Talbott	3	7	3	4	1	3	0	3	3	2	10	0	0	0	0	24:09
22	Stafonia Taylor	1	1	0	0	0	0	0	1	1	1	2	0	0	0	0	1:32
33	Daneshia Scott	0	0	0	0	0	0	0	0	0	0	0	0	0	0	0	DNP
50	Jane Ford	0	0	0	0	0	0	0	0	0	0	0	0	0	0	0	DNP
55	Laquasha Jones	0	0	0	0	0	0	0	0	0	0	0	0	0	0	0	DNP
<b>Team (Included in Totals)</b>								<b>2</b>	<b>1</b>	<b>3</b>							
<b>Totals</b>		<b>17</b>	<b>47</b>	<b>3</b>	<b>7</b>	<b>9</b>	<b>15</b>	<b>7</b>	<b>16</b>	<b>23</b>	<b>11</b>	<b>46</b>	<b>11</b>	<b>5</b>	<b>1</b>	<b>7</b>	<b>160</b>

Total FG%: 1st half 11 - 27 (40.7%) 2nd half 6 - 20 (30.0%) Game 17 - 47 (36.2%)  
 3Pt FG%: 1st half 3 - 6 (50.0%) 2nd half 0 - 1 (0.00%) Game 3 - 7 (42.9%)  
 FT%: 1st half 2 - 4 (50.0%) 2nd half 7 - 11 (63.6%) Game 9 - 15 (60.0%)

Deadball rebounds 3

Technical Fouls: None

Attendance: N

Officials: Unknown

Score by Period	1st	2nd	3rd	4th	Final	Record	Overall	Conf
Montgomery County Lady Indians	8	16	9	4	37	Lady Indians		
Iroquois Lady Raiders	13	14	6	13	46	Lady Raiders		

<b>Lady Raiders</b>	<b>Lady Indians</b>	<b>Lady Raiders</b>	<b>Lady Indians</b>	<b>Lady Raiders</b>	<b>Lady Indians</b>
Points off Turnovers	20	2	Second Effort Points	5	13
Points in the Paint	26	20	3 Point Points	9	6
3pt Efficiency	+19.5	-19.2	Points/Shot	0.85	0.88
Largest Lead	13	4	Lead Changes	6	
		(9 pts)			
				Bench Points	22
				Free Throw Points	9
				Defensive Stops	35
				Number of Ties	4
					31

Game comments: None